

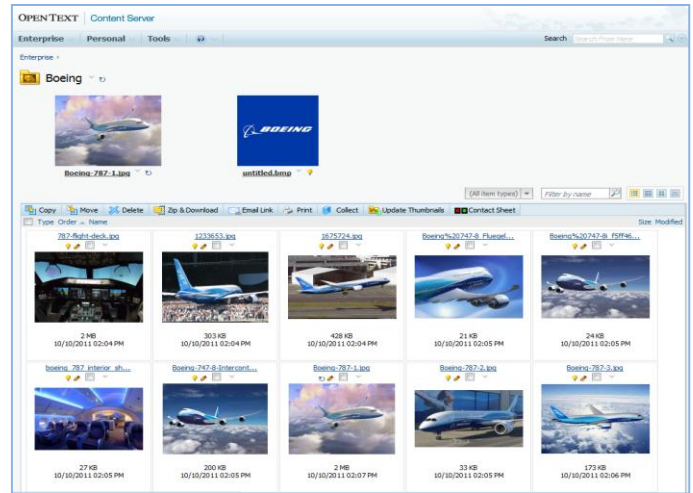


Highlights

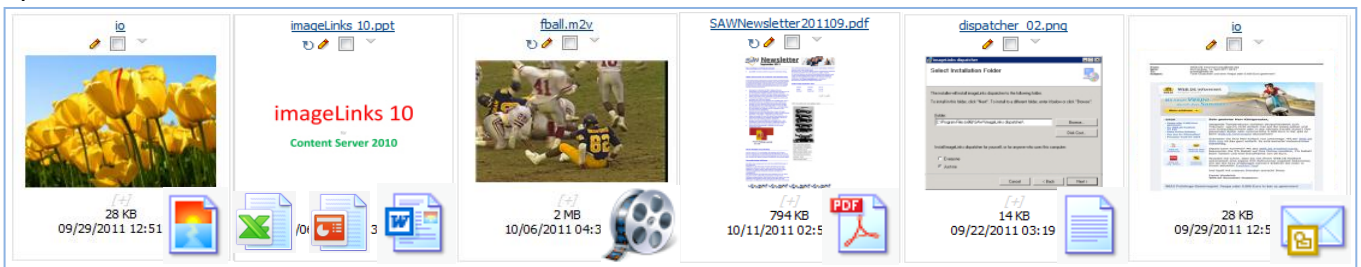
Manage your images, videos, PDF's, e-mails and MS Office formats. Using thumbnail and preview mode all objects can be found a lot easier.

With **imageLinks** the user just opens the image he needs. This helps to save network resources and provides faster access to the requested object.

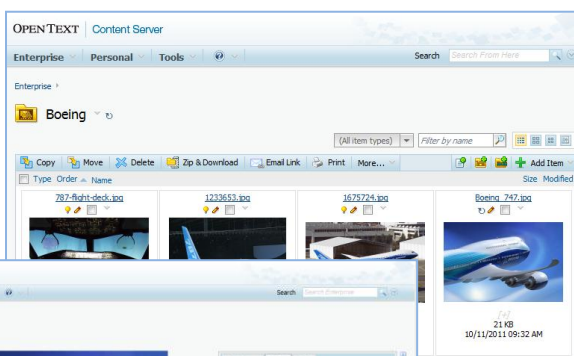
imageLinks offers thumbnails and previews for a concise display of images. Image collections can be assembled and navigated easily in their album view.



imageLinks enables users to manage not only documents but also images, PDF's and videos in an Open Text ECM Suite environment.



It integrates with the Open Text Content Server component of the Open Text Suite and supports image formats and also MS Office formats virtually, i.e. MS-Word (doc, docx), MS-Excel (xls, xlsx), e-mail (msg) or MS-PowerPoint (ppt, pptx).



Thumbnail

For every image checked in into the Content Server system a thumbnail and preview will be created additionally to the original image. The desired document can be found much easier thereby.

Preview

The thumbnail view presents an image with its title, subtitle, size, create / modify date (default Open Text Content Server functionality).

By clicking on the thumbnail the preview image opens in a screen-filling display with categories, IPTC and Exif meta data. In this mode the resolution of the original image is irrelevant as the standard resolution of the preview mode is used.



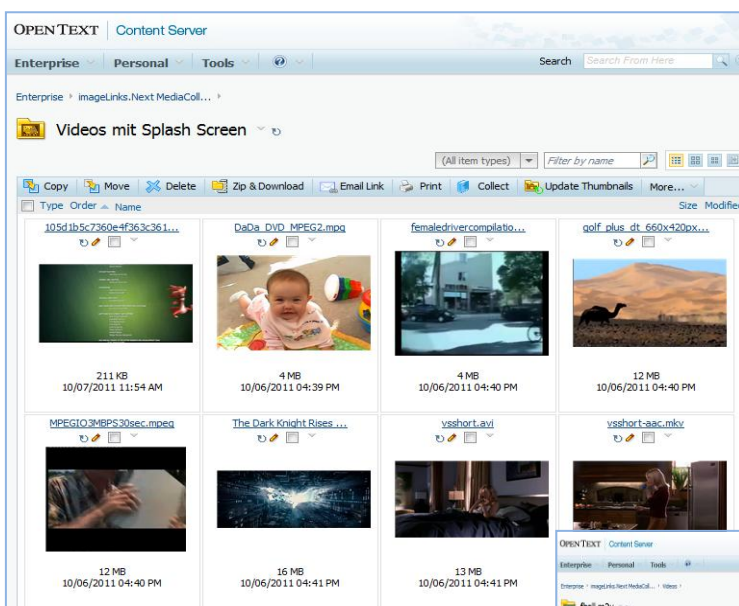
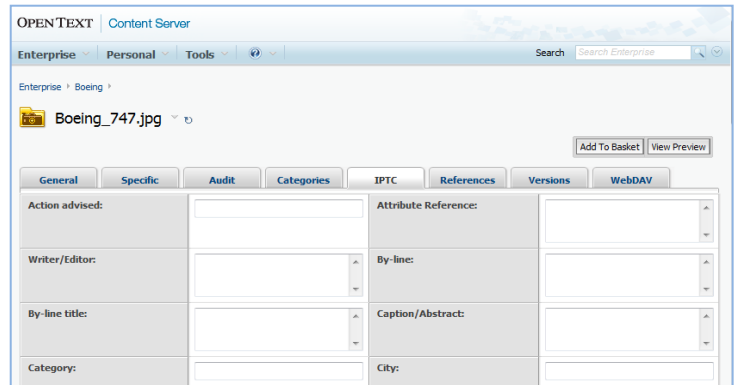


Metadata

imageLinks is able to show the metadata standards IPTC and Exif in jpg files.

The **IPTC metadata** can be used as a more detailed description and classification of images. They can be **edited** by a Content Server user.

Exif metadata cannot be changed as they contain the original image metadata such as date, time and shutter of the camera that has generated the image.



Video

After a Clip has been added, there is automatically created a random thumbnail out of the scene.

All added video formats are converted into Flash which grants a fast performance and above all: there is no need to install a player to view the videos.

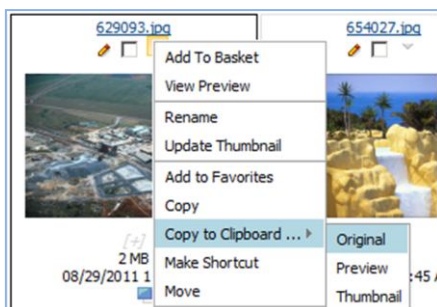
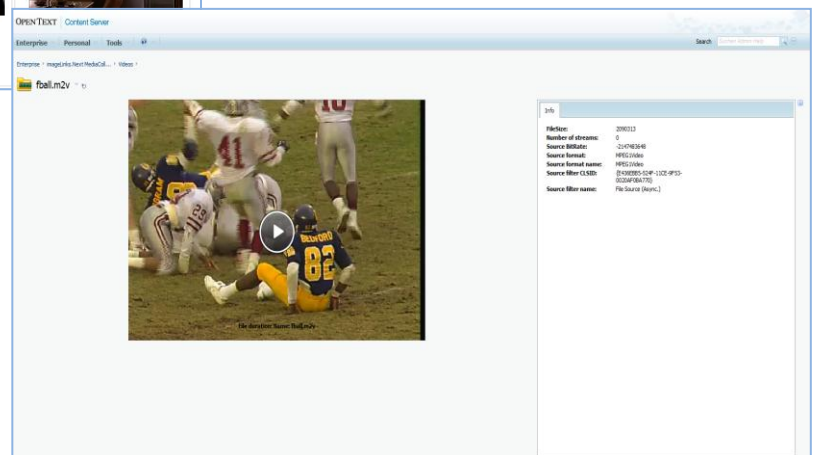
To view the video clip you can either use the View Video function at the drop down menu or you can start the video by clicking on the thumbnail.

Video Player

Many video formats support metadata (like IPTC metadata) attached directly to the file (in-file metadata / meta tags).

This metadata are shown right hand side the movie, but these tags are not searchable within OT Content Server.

Additionally it is not lost when a user downloads the file to their computer instead of viewing it.



Copy to clipboard

An image can be inserted into an Office document by using the easy copy to clipboard functionality.

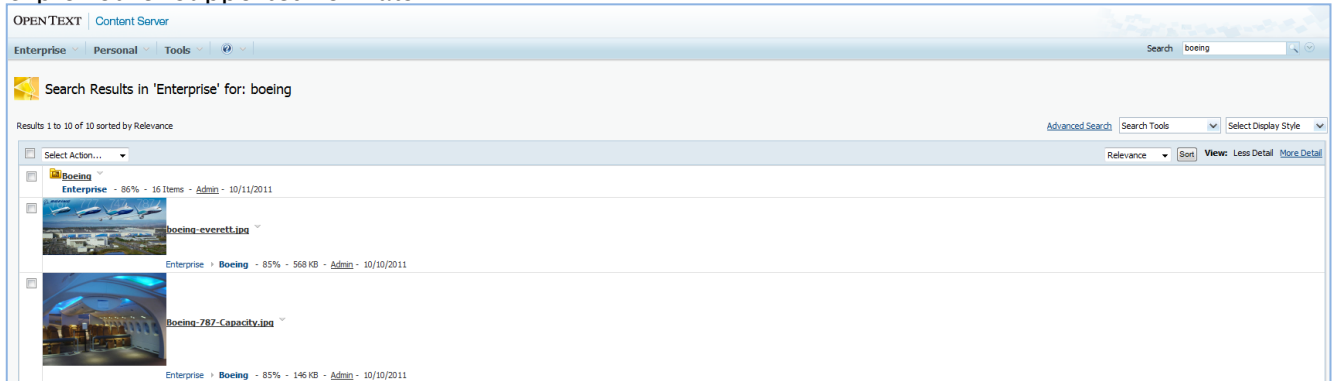
Depending on the intended use there is a choice between different image sizes (thumbnail, preview or original size)





Search Result

Furthermore the content of metadata (IPTC, Exif) as well as the standard Open Text Content Server ECM metadata are full text searchable. The search result includes the thumbnail of the image, video clip or other supported formats.



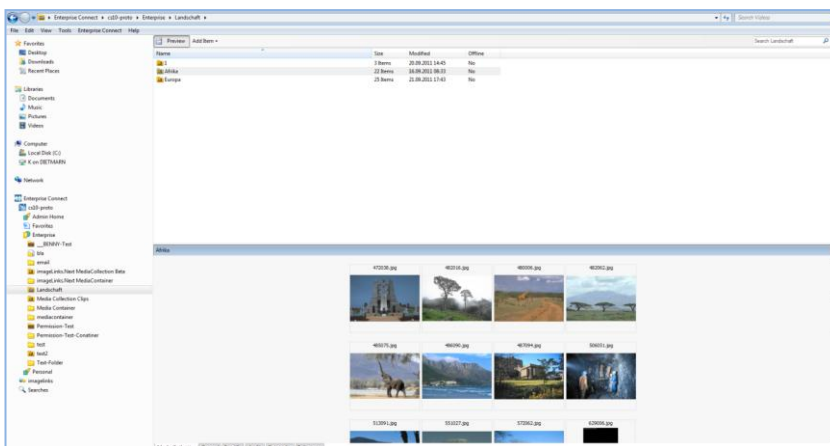
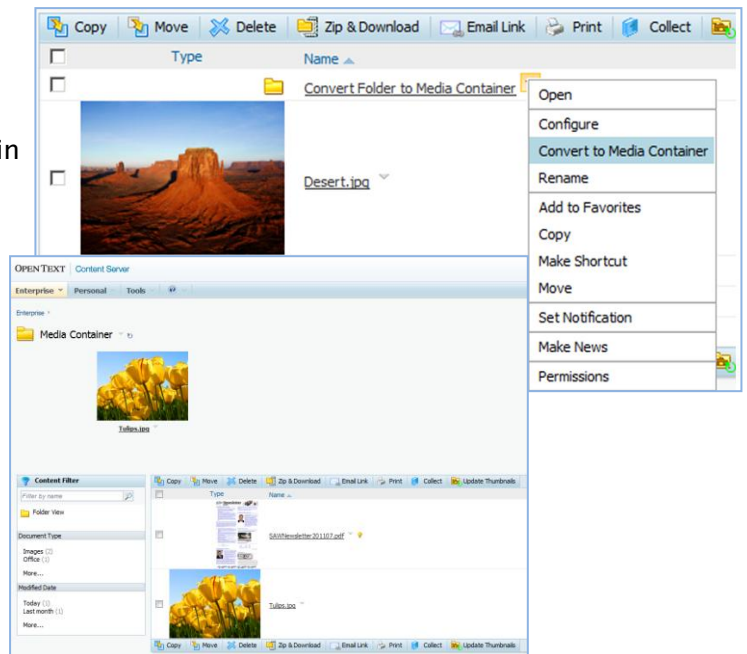
Folder conversion

imageLinks now offers the functionality for thumbnail and preview also in a standard OT Content Server folder.

To use this functionality the standard folder in a Media Container object type has just to be converted.

The reconversion from Media Container to the standard folder can be done as easily.

The Media Container offers the ability of displaying thumbnail and preview in a standard Content Server folder - while the Media Collection object type provides the entire functionality to manage digital assets.



Enterprise Connect

The **imageLinks** functionalities are basically supported within Enterprise Connect. All functionalities are available in the Enterprise Connect as well as in the web interface. The editing by using the context menu provides also the same possibilities just as well as in the web interface. As long as you are clicking on a media collection or media container you will find the preview representation of your images and videos on the lower right side of the screen. Videos can be played within the preview also.





Your Benefit

- Easy management of all kinds of assets - from PDF, office documents to a large number of image and video formats
- Faster access to the information stored in the Content Server ECM environment
- Reduction of network traffic by accessing image previews with reduced resolution instead of the original high resolution image files

Functionalities

- Almost every raster and vector formats / MS Office formats
- Thumbnail and screen filling preview mode for each object
- Support of Adobe Photoshop® formats (i.e. PSD, EPS, ...)
- Exif are shown and searchable in jpg files
- IPTC metadata are shown, searchable and editable in jpg files.
- A .shopping basket. enables users to collect documents, images and videos throughout the entire Open Text Content Server ECM
- Image viewer with integrated editing functionalities (e.g. crop, rotate, zoom and 25 different filter functions)
- Storage of edited images as a new version or new image
- Copying of thumbnail, preview or original image to MS Office applications (also Resized Copy to Clipboard)
- Convenient navigation within the album view
- Configuration and administration on the Content Server Admin page
- Support of remote cache server functions
- Media Collections can be a resource for virtual folders
- additional add-on module **geoLinks**: this module combines your images with MS-Bing Maps by including GPS information to your picture - see flyer **geoLinks**

Information

For additional information about **imageLinks** please go to <http://www.sawag.com/de/produkte/untermenue2/imagelinks.html>

Requirements

Livelihood-Server from Version 9.5, installed on an Operating System and connected to a Database as specified in the respective Release Notes.



SAW System-Analyse Weissenbacher AG

Waldmuenchener Strasse 12 Telefon: +49 (0)89 - 68 08 83 60
D-81549 Muenchen Telefax: +49 (0)89 - 68 08 83 89

<mailto:saw@sawag.com>



ECM Solution Experts

